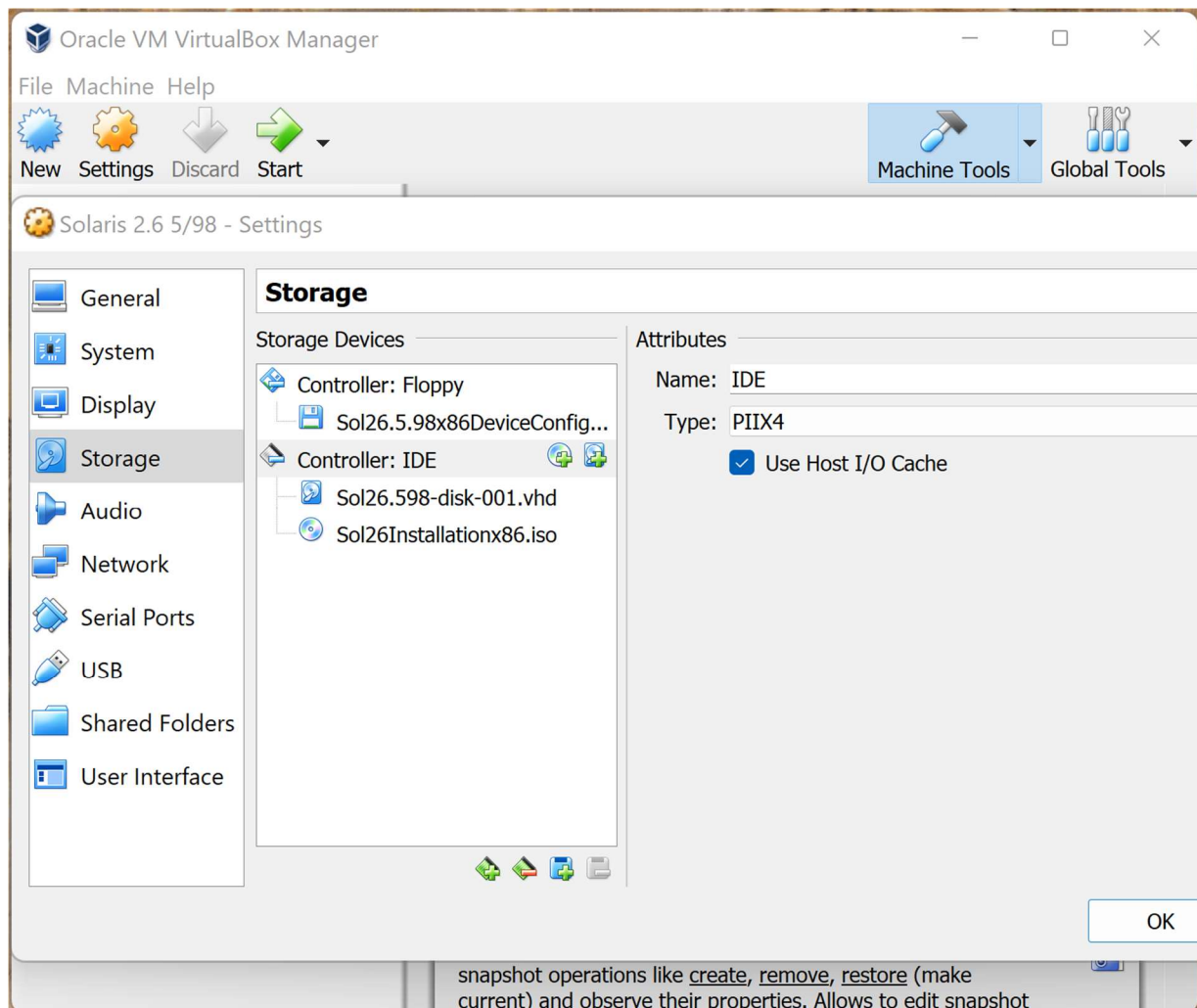
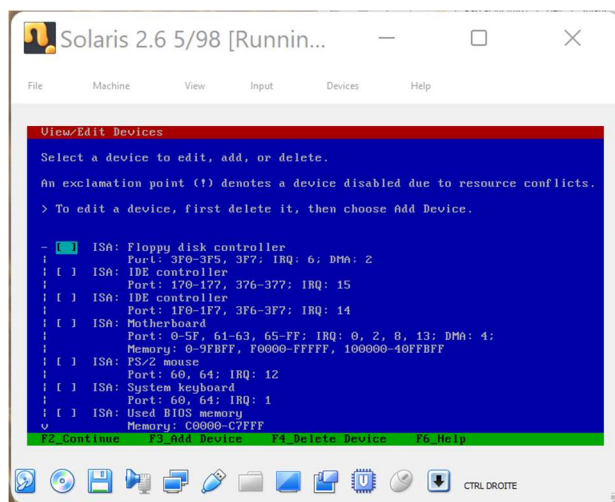
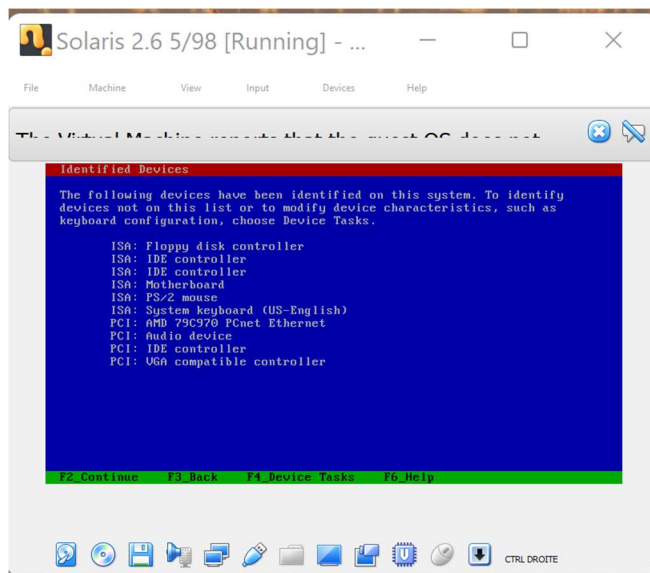
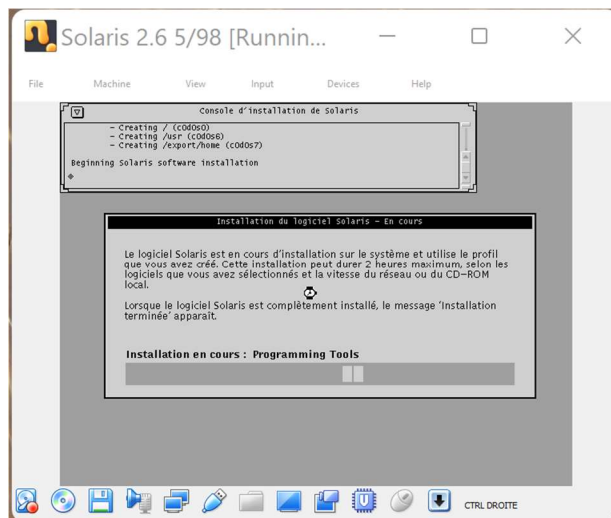


Same troubles with the PS/2 mouse on VirtualBox.

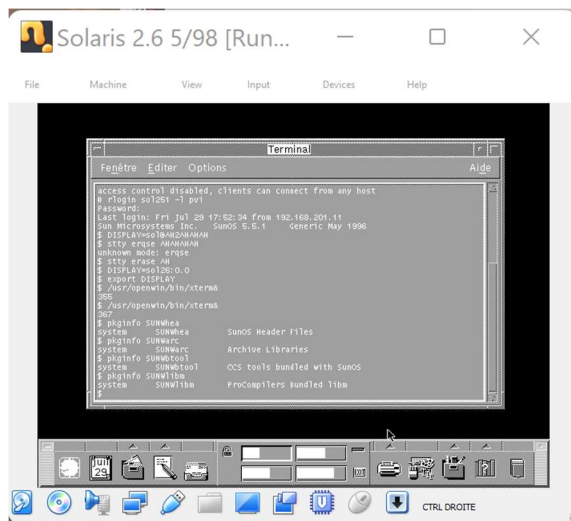


The Virtual Machine reports that the guest OS does not support **mouse pointer integration** in the current video mode. You need to capture the mouse (by clicking over the VM display or pressing the host key) in order to use the mouse inside the guest OS.





And after



A Solaris 2.6 can login to Solaris 2.5.1 (x86)

I have a surprise, my mouse runs ... but after leaving the guest OS ...

Disappeared.